

TriniTV:

View Digital Video Reserves and selected TV channels on your computer

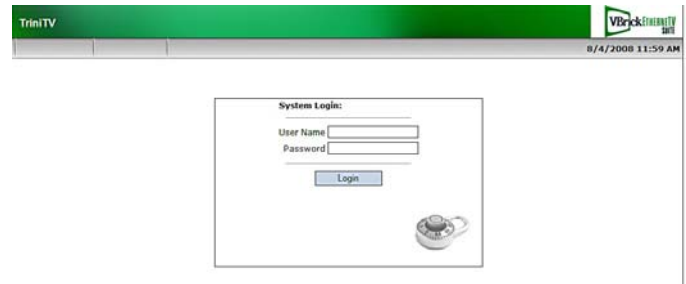
TriniTV is Trinity's network video streaming service for classroom digital video reserves as well as special events and selected cable TV channels. Currently, we are streaming seven cable channels: CNN, Discovery, Comedy Central, ESPN, Fox, MTV and mtvU. TriniTV is still a relatively new service on campus, but it is growing rapidly.

These instructions focus on using TriniTV on a Windows-based PC running Vista or XP, or a Mac running Leopard or Tiger. If you have a Mac, be sure that you are running the latest version of QuickTime. Please refer to the system requirements at the end of this document and be sure that your system meets them.

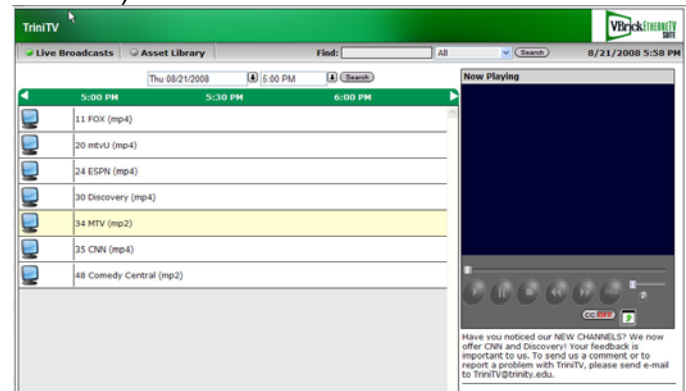
PLEASE NOTE:

- **You must be on a wired campus ethernet connection to view the media streams.** The streams will not play correctly over a wireless connection. Even if you have connected your laptop to a network port via a wire, a wireless card can interfere with TriniTV's operation. You may find it necessary to disable your wireless card temporarily in order to view TriniTV. If you need assistance in disabling your wireless card, please contact the ITS Help Desk.
- **You must be logged on to your computer with an account that has administrator privileges in order to begin the installation procedure in Step 1.** If you do not have administrator privileges on your computer, please contact the ITS Help Desk for assistance in beginning this installation.

Step 1: Install Software. Open Internet Explorer on the PC, Safari on the Mac. THE TriniTV SOFTWARE WILL NOT WORK PROPERLY IN OTHER BROWSERS. In the address line, enter <http://www.trinity.edu/CLT> and hit Enter to bring up the CLT home page. Mouse over "TriniTV" and click on "Watch TriniTV". If a secondary page with a link to TriniTV comes up, click on that link as well. A System Login page will appear.



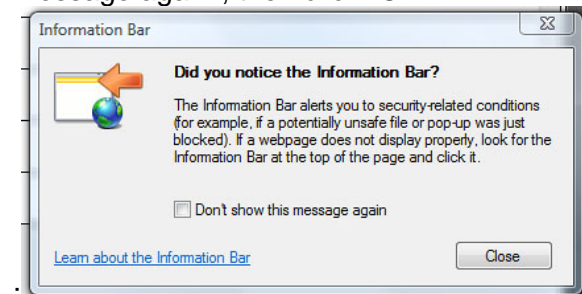
Enter your regular Trinity network user name and password and click "Login". The TriniTV home screen will come up (the "Now Playing" window will be grayed out rather than blue until the software is installed):



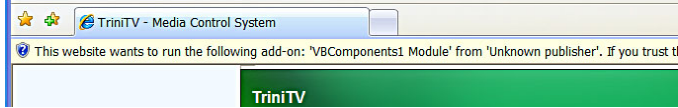
**** PC users continue reading here; Mac users please jump to "Mac Plugin Installation" in the orange box below. ****

PC Plugin Installation

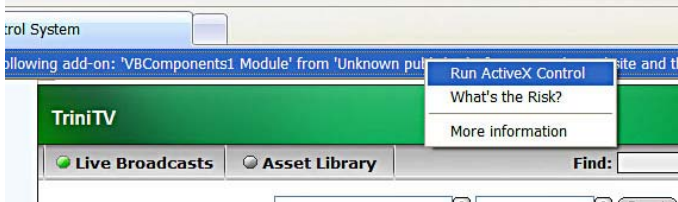
If the following popup message appears on the screen, note the Information Bar to which it refers (below the address bar in the browser window), then click the checkbox for "Do not show this message again", then click "OK"



Look at the Information Bar . You should see a message similar to the following, highlighted in yellow, in the bar:

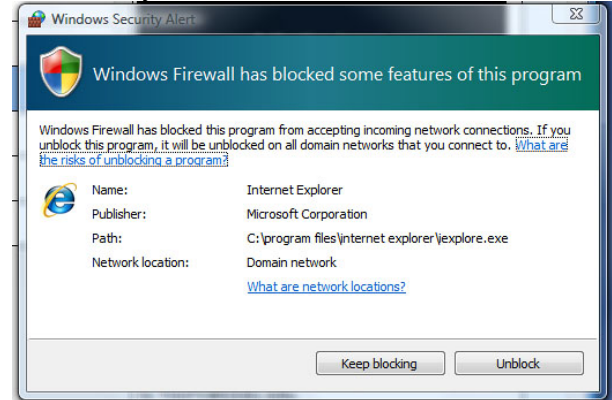


Click in the Information Bar. A drop-down menu will appear: Click on “Run ActiveX Control”.

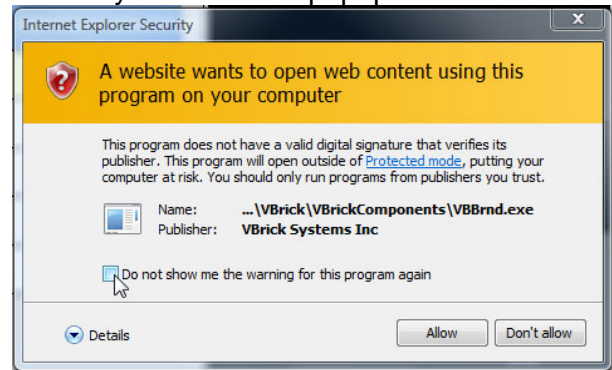


Repeat this action for each of the series of ActiveX install requests that now appear in the Information Bar (there may be four or five).

Step 2: Watch TV. Click “Live Broadcasts.”. A list of available channels will appear (currently, there are seven). Select the desired channel and click to begin watching. **Windows users:** when you click on a channel, you may see the following popup screen. If you do, click on “Unblock”.

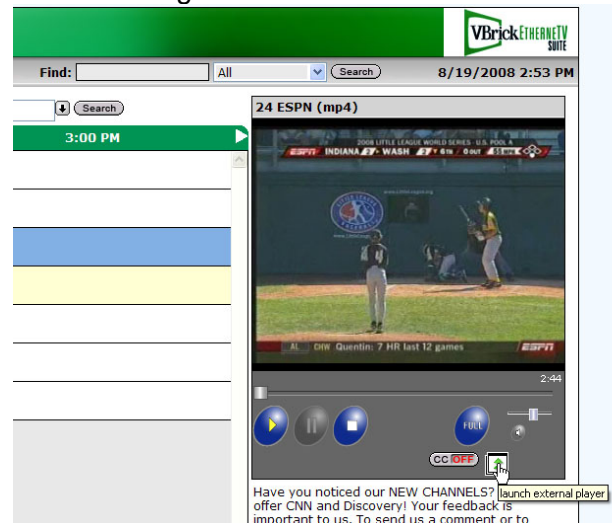


You may also see this popup screen:



If you do, check “Do not show me the warning for this program again”, then click “Allow”.

Once the live stream is active, you may click the green arrow under the “Now Playing” window to view the image in a resizable window, or FULL to view the image full screen.

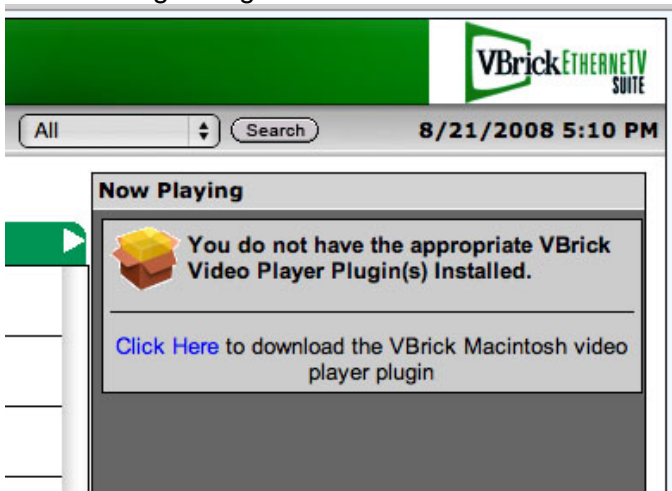


Mac Plugin Installation.

You will see the following popup message from Safari. Click “OK.”



Look in the “Now Playing” window. You should see the following dialog box:



Click on “Click Here” and follow the prompts to install the plugin on your computer.

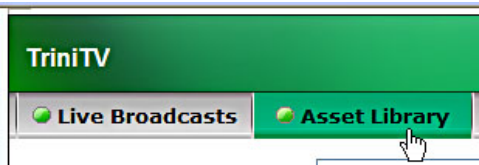
You can even minimize the Live Broadcasts list window, leaving the channel you selected playing in its own window while you work on other things.

Current channel lineup:

Fox	(Channel 11)
mtvU	(Channel 20)
ESPN	(Channel 24)
Discovery	(Channel 30)
MTV	(Channel 34)
CNN	(Channel 35)
Comedy Central	(Channel 48)

Viewing Video-on-Demand on TriniTV:

In addition to live broadcasts, TriniTV also hosts stored video content that can be viewed by students, faculty and staff on their own time, at their own pace. To access this content, return to the TriniTV home page and click on the “Asset Library” tab.



If you are enrolled in a class for which your instructor has requested that a video be placed in the video library, you will see a folder for your class on this page. Just click on the folder, then click on the video title to view the video. You can use the controls beneath the viewing window to stop, start, or pause the video, or quickly seek forward or back in the video by using the slider just beneath the viewing window.

System requirements:

Note: The user interface of the TriniTV application is designed for viewing at a screen resolution of 800 x 600 or 1024 x 768. Screen resolutions lower or higher than this may not display appropriately.

Windows-based PCs

- Windows 98, 2000, XP (SP2), Vista.
- 500MHz Pentium III processor minimum; 750MHz or higher recommended.
- 128 MB RAM.
- SVGA video card 640x480, 256 colors, video card acceleration recommended.
- Windows-compatible sound device.
- Minimum 10 MB hard disk space for installation.
- Microsoft Internet Explorer 5.5 or higher.
- DirectX Media 8.1 or higher.

Macintosh

- Mac OS X Tiger, or OS X Leopard version 10.5.2 or later, with Safari 1.0 (or higher); QuickTime Player 6.0 or higher. (Internet Explorer for Mac is no longer supported.)