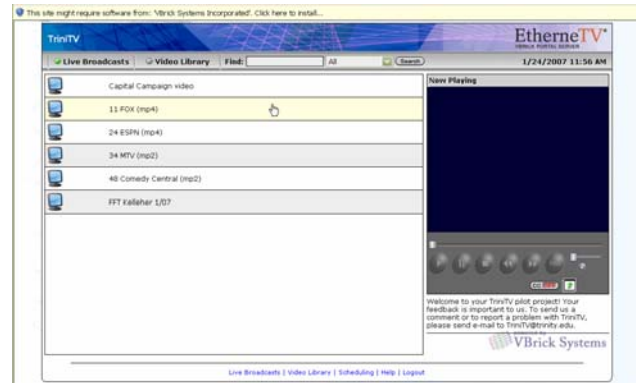


Trinity is streaming seven TV channels (CNN, Discovery, Comedy Central, ESPN, Fox, MTV and mtvU) over our data network. To view these programs on your desktop, you first need to download and install some software on your computer. These instructions refer to the installation procedure for Windows-based PCs. Macs should play the streams without requiring additional downloads, but be sure you are running the latest version of QuickTime on your Mac. Please refer to the system requirements at the end of this document and be sure that your system meets them.

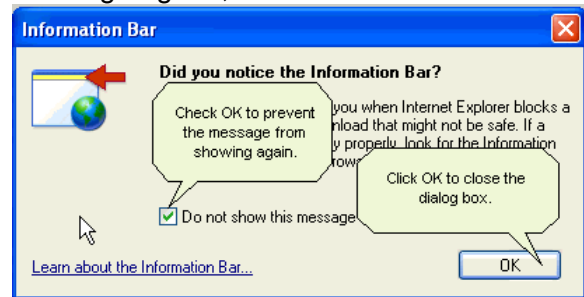


(actual content listed may vary)

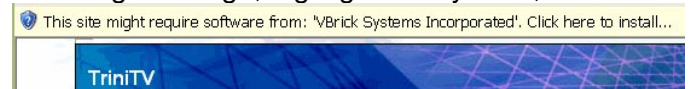
PLEASE NOTE:

- **You must be on a wired campus ethernet connection to view the media streams.** The streams will not play correctly over a wireless connection. Even if you have connected your laptop to a network port via a wire, a wireless card can interfere with TriniTV's operation. You may find it necessary temporarily to disable your wireless card in order to view TriniTV. If you need assistance in disabling your wireless card, please contact the ITS Help Desk.
- **You must be logged on to your computer with an account that has administrator privileges in order to begin the installation procedure in Step 1.** If you do not have administrator privileges on your computer, please contact the ITS Help Desk for assistance in beginning this installation.

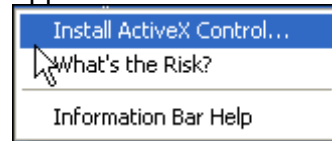
If the following popup message appears on the screen, note the Information Bar to which it refers (below the address bar in the browser window), then click the checkbox for "Do not show this message again", then click "OK":



Look at the Information Bar . You should see the following message, highlighted in yellow, in the bar:



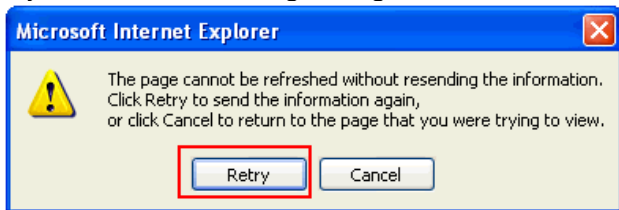
Click in the Information Bar. A drop-down menu will appear: Click on "Install ActiveX Control".



Repeat this action for each of the series of ActiveX install requests that now appear in the Information Bar (there may be four or five).

Step 1: Install Software. Open Internet Explorer. THE TRINI TV SOFTWARE WILL NOT WORK IN BROWSERS OTHER THAN INTERNET EXPLORER (Safari on the Mac). In the address line, enter <http://www.trinity.edu/clt> and hit Enter. At the CLT home page, click on "View TriniTV". A System Login page will appear. Enter your regular Trinity network user name and password and click "Login". The TriniTV home screen will come up:

If you see the following dialog box:



click on “Retry”.

Step 2: Watch TV. Click “Watch Live Broadcasts”. A list of available channels will appear (currently, there are seven). Select the desired channel and click to begin watching. When you click on a channel, you may see the following popup screen. If you do, just click on “Unblock” and the video will begin streaming.



Once the live stream is active, you may click FULL to view the image full screen, or LAUNCH EXTERNAL PLAYER to view the image in a resizable window. You can even minimize the Live Broadcasts list window, leaving the channel you selected playing in its own window while you work on other things.

Current channel lineup:

Fox	(Channel 11)
mtvU	(Channel 20)
ESPN	(Channel 24)
Discovery	(Channel 30)
MTV	(Channel 34)
CNN	(Channel 35)
Comedy Central	(Channel 48)

Viewing Video-on-Demand on Trinity TV:

In addition to live broadcasts, TriniTV also hosts stored video content that can be viewed by students, faculty and staff on their own time, at their own pace. To access this content, return to the TriniTV home page and click on the “Video Library” tab.

If you are enrolled in a class for which your instructor has requested that a video be placed in

the video library, you will see a folder for your class on this page. Just click on the folder, then click on the video title to view the video. You can use the controls beneath the viewing window to stop, start, or pause the video, or quickly seek forward or back in the video by using the slider just beneath the viewing window.

System requirements:

Note: The user interface of the TriniTV application is designed for viewing at a screen resolution of 800 x 600 or 1024 x 768. Screen resolutions lower or higher than this may not display appropriately.

Windows-based PCs

- Windows 98, 2000, XP (SP2).
- 500MHz Pentium III processor minimum; 750MHz or higher recommended.
- 128 MB RAM.
- SVGA video card 640x480, 256 colors, video card acceleration recommended.
- Windows-compatible sound device.
- Minimum 10 MB hard disk space for installation.
- Microsoft Internet Explorer 5.5 or higher.
- DirectX Media 8.1 or higher.

Macintosh

- Mac OS X with Safari 1.0 (or higher); QuickTime Player 6.0 or higher. (Internet Explorer for Mac is no longer supported.)